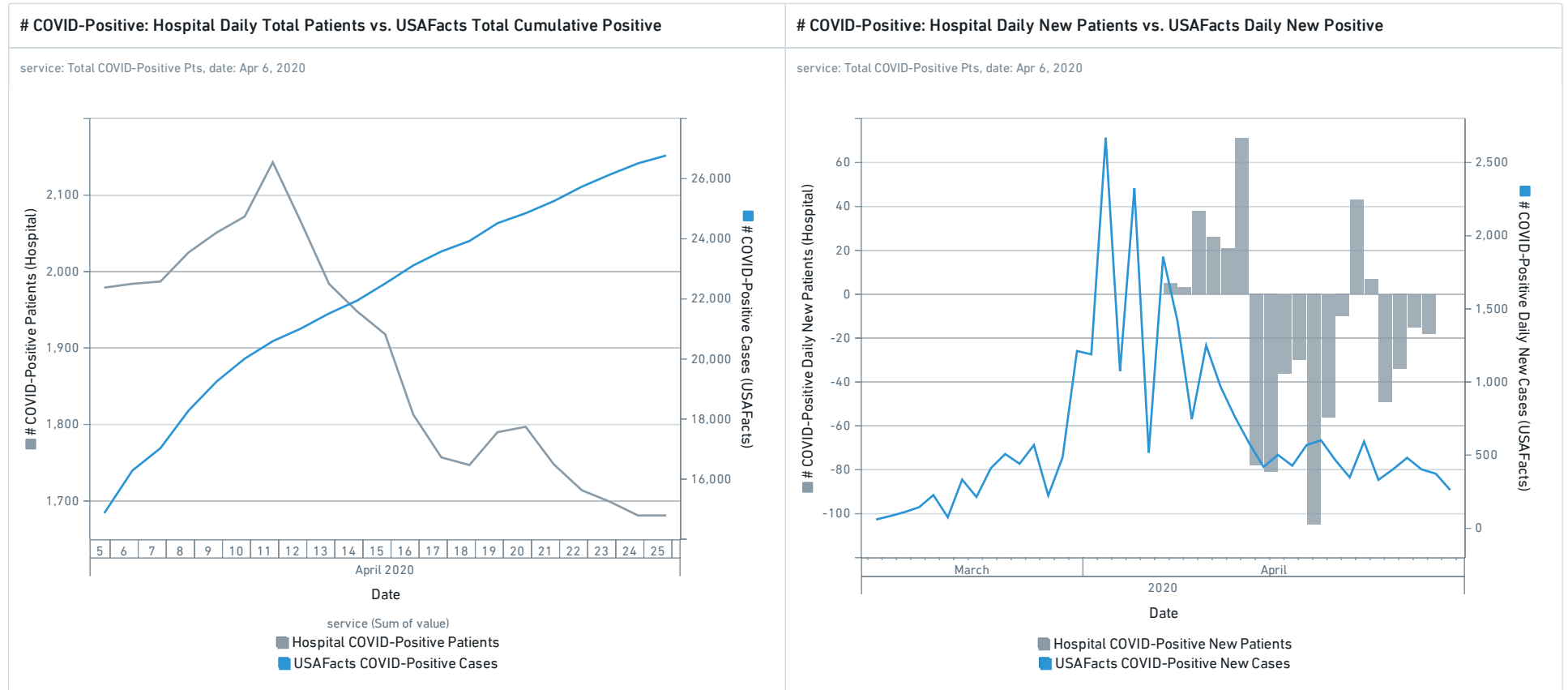


Tulane Case Review Report

I. Review of Total COVID-Positive: Comparing Hospital-reported patient figures against USAFacts total figures

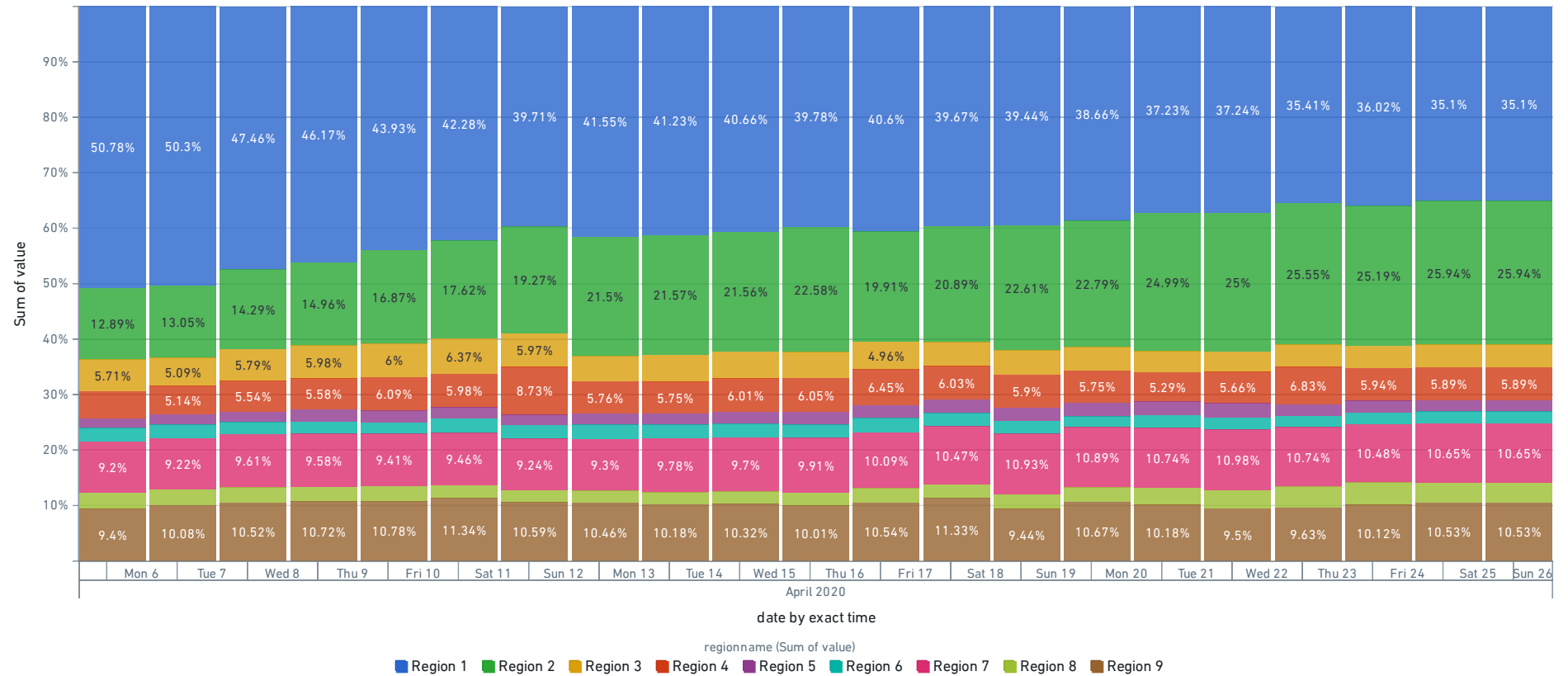


The above chart reviews in daily total volume of hospital COVID-POSITIVE patients against the broader publicly reported cases for the state. It's worth noting here that this is a comparison of ongoing hospitalizations against cumulative cases, not cumulative hospitalizations since that data is currently unavailable. Please note that there are two separate Y-axis.

Zooming in further, this chart looks at just the daily difference in COVID-POSITIVE patients in hospitals against the daily difference in total reported cases. Please note that there are two separate Y-axis.

COVID-Positive Hospitalizations by Region (%)

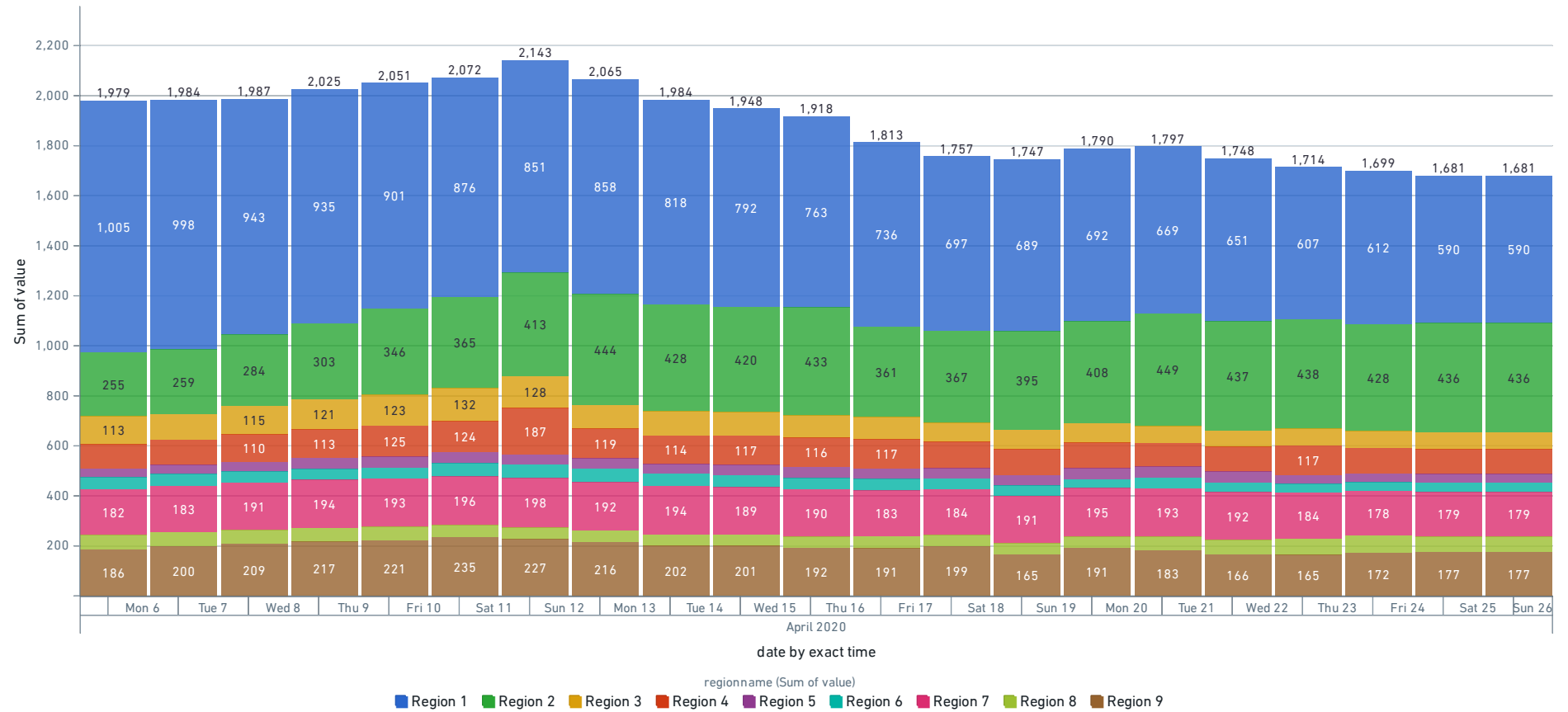
service: Total COVID-Positive Pts, date: Apr 6, 2020



Over time, the total % of all COVID-Positive hospitalizations shifted from primarily in Region 1, to just 35.1% in Region 1.

COVID-Positive Hospitalizations by Region (Absolute)

service: Total COVID-Positive Pts, date: Apr 6, 2020

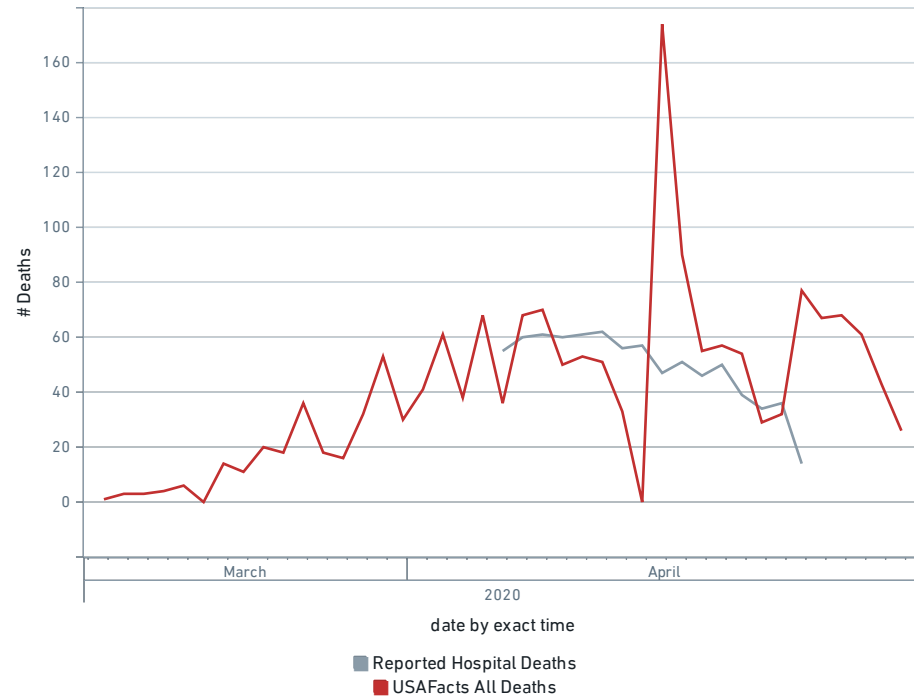


The above chart is the same underlying data for total COVID-Positive hospitalizations, but by absolute values.

II. Review of Total COVID Fatalities: Comparing Hospital-reported patient fatalities against USAFacts total fatalities

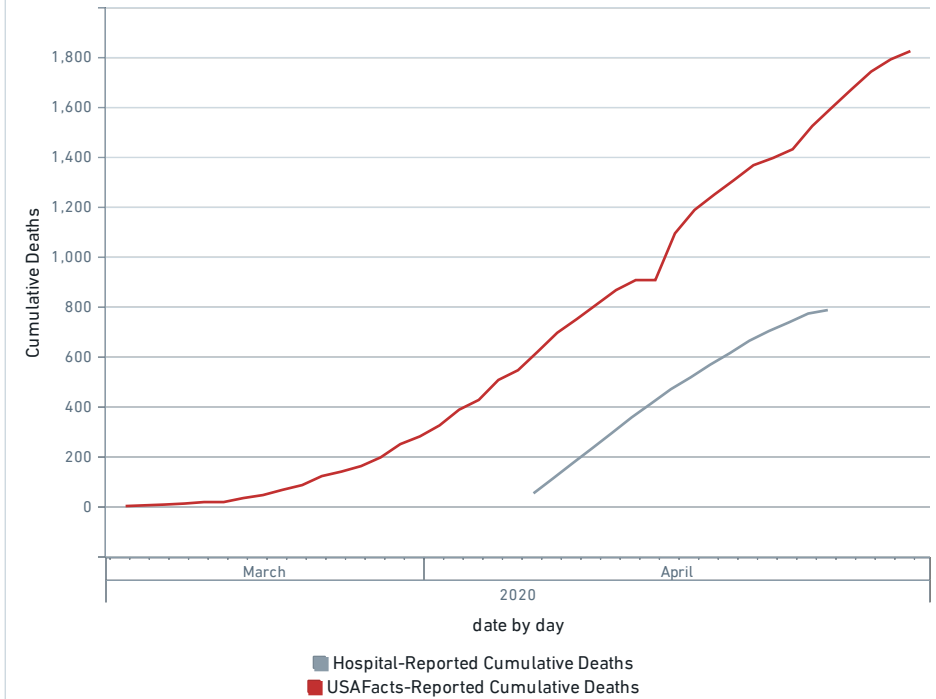
COVID-Related Daily Fatalities: Hospital Reported vs. USAFacts Total Reported

date: Apr 6, 2020



COVID-Related Cumulative Fatalities: Hospital Reported vs. USAFacts Total Reported

date: Apr 6, 2020

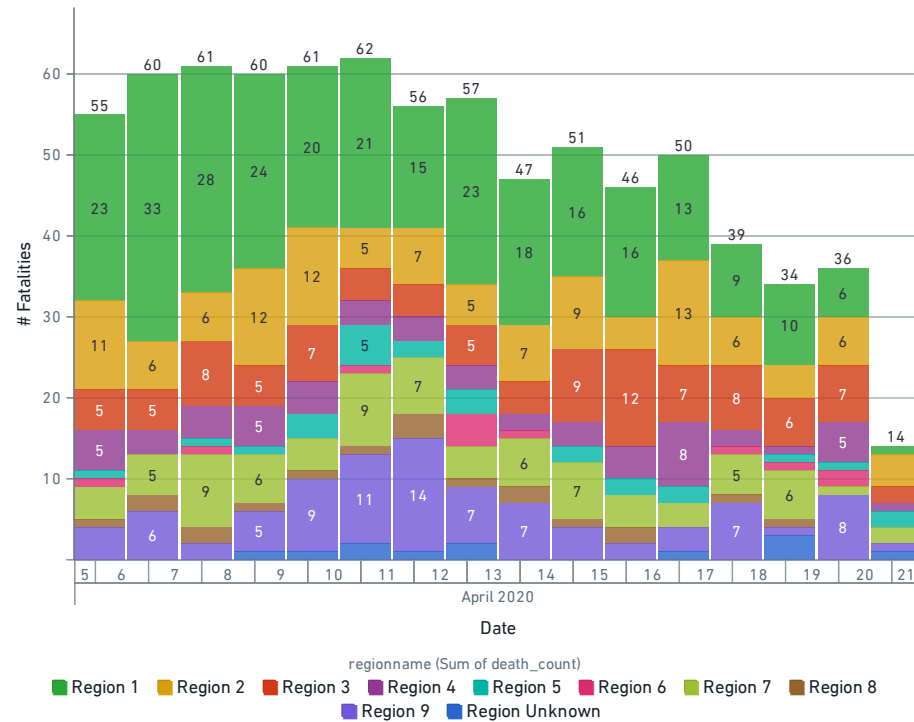


There is about 1~2 days lag in the USAFacts attribution of deaths compared to hospital-reported figures. Please note also that the hospital-reported deaths fill in a few days later at times, so the deaths for the most recent few days may increase.

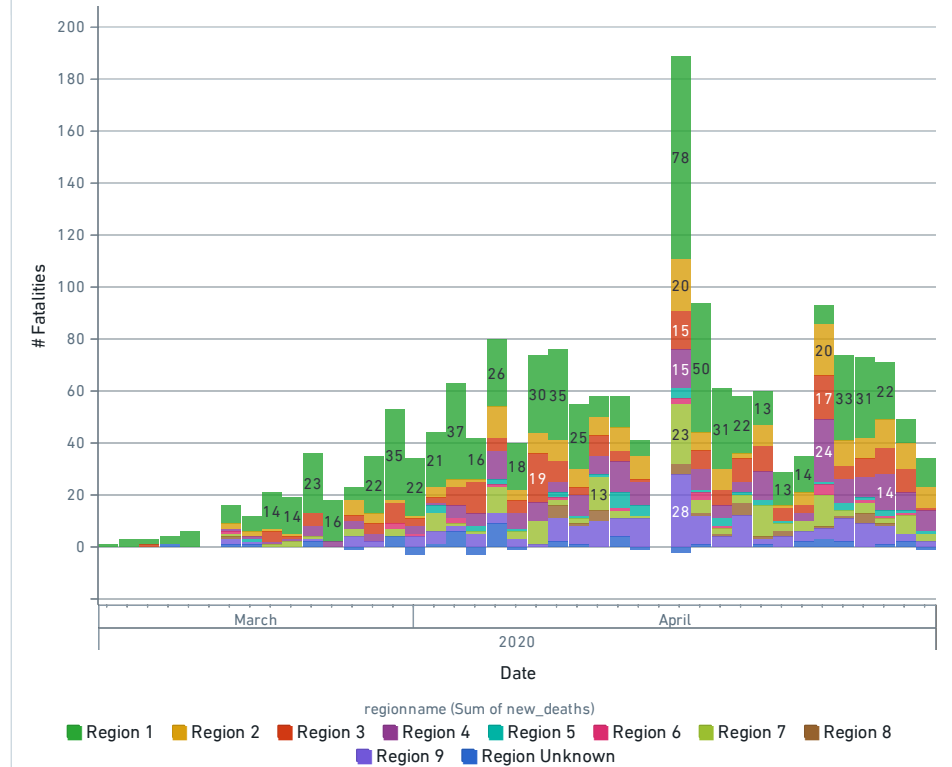
This 1~2 days lag in the USAFacts attribution of deaths compared to hospital-reported figures is more apparent in the cumulative view.

Hospital-Reported COVID Fatalities by Region

date: Apr 6, 2020



USAFACTS-Reported COVID Fatalities by Region



The above chart shows the count of deaths provided by hospitals broken down by region. It's worth noting that hospital-reported deaths tend to fill in more for the most recent days, a couple days later. Thus, the most recent few days may be subject to change.

The above chart shows the count of deaths as provided by USAFACTS broken down by region.

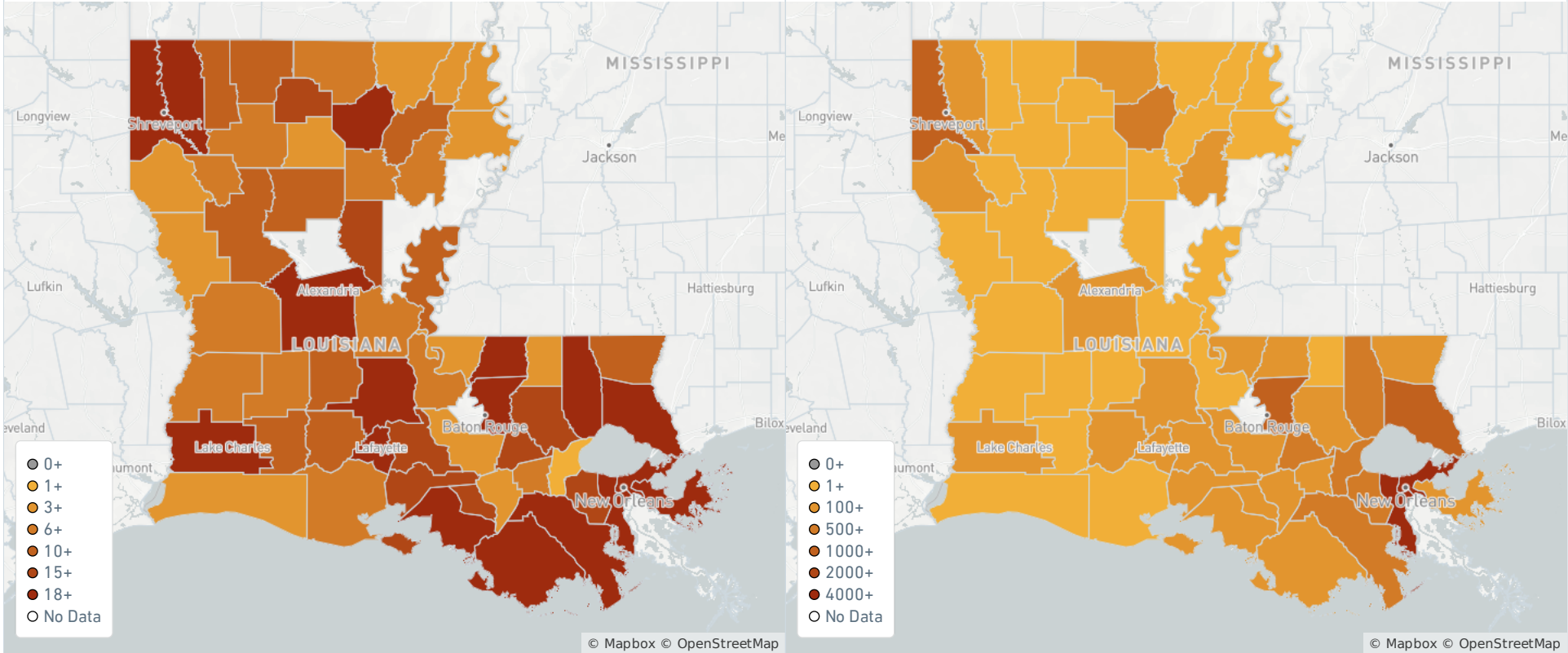
III. Map Deep-Dive of Total COVID-Positive Impact across Louisiana

Hospital Count

Cumulative Cases Reported by USAFacts

date: Apr 6, 2020

date: Apr 6, 2020

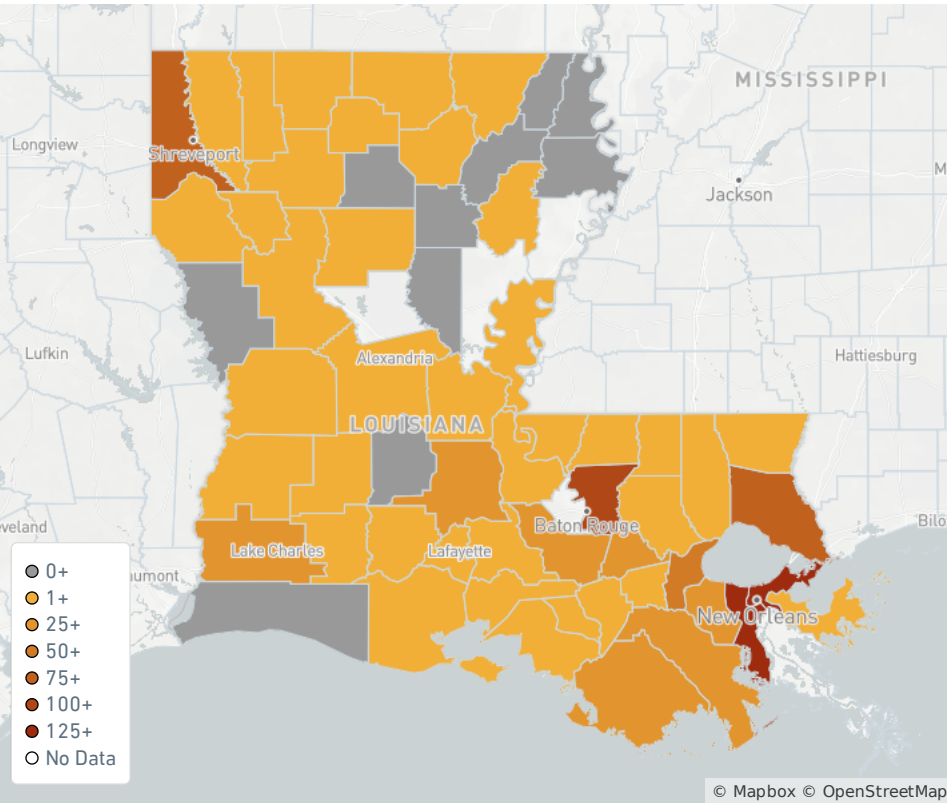


The above shows the number of hospitals in each region, comparing to the chart on the right which shows # of cases.

The above chart of total confirmed cases per county reflects the areas where there are cases but no hospitals (e.g. Grant Parish).

Cumulative Fatalities Reported by USAFacts

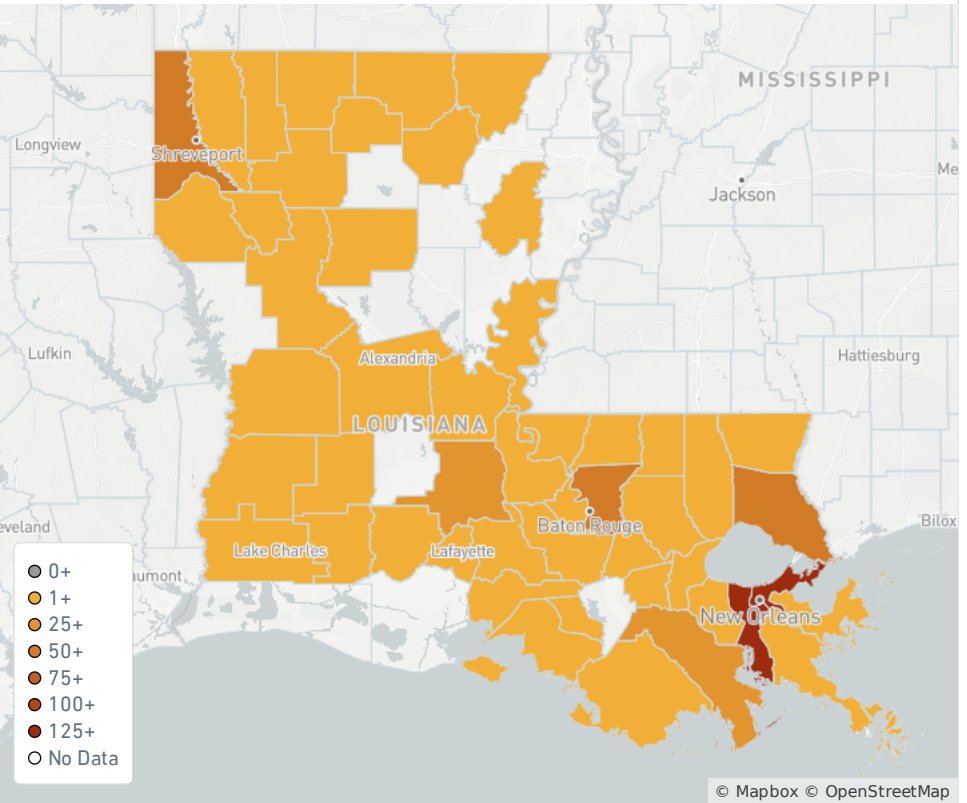
date: Apr 6, 2020



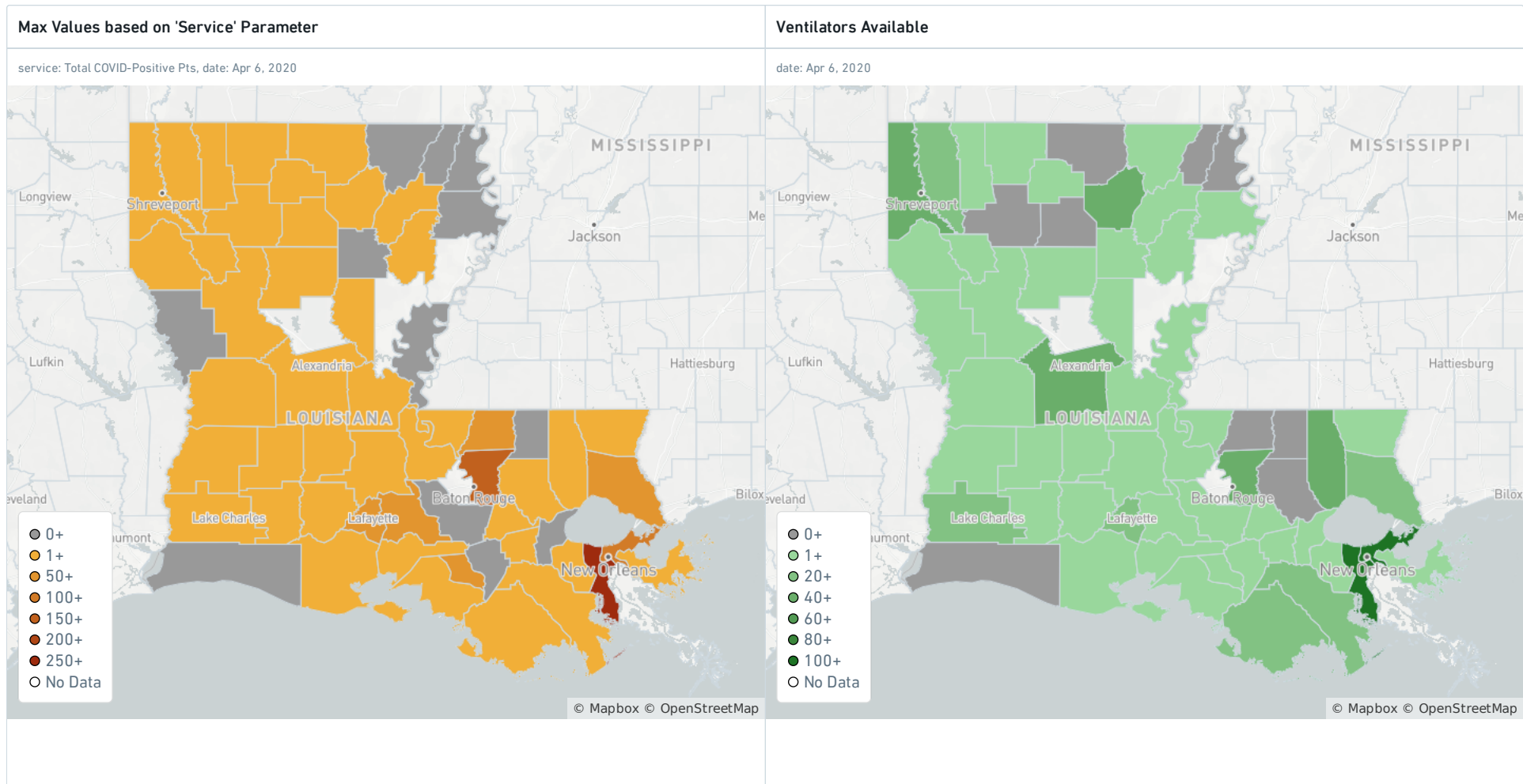
The above chart reflects total fatalities by parish, compared to the chart on the right which reflects just hospital-reported patient fatalities.

Cumulative Fatalities Reported from Hospitals

date: Apr 6, 2020



The above chart, limited to hospital-reported patient fatalities, shows that certain counties did not have hospital-reported fatalities, but did have state-reported fatalities.



The above chart does where the COVID-Positive patients are hospitalized, which shows areas as compared to earlier where there are cases generally. Areas that have high cases but not yet high hospitalizations may warrant analysis on how those patients are currently supported.

The above chart shows in green the areas with the highest number of available ventilators, which may help in guiding the re-allocation of patients to areas where there is outstanding capacity supply.